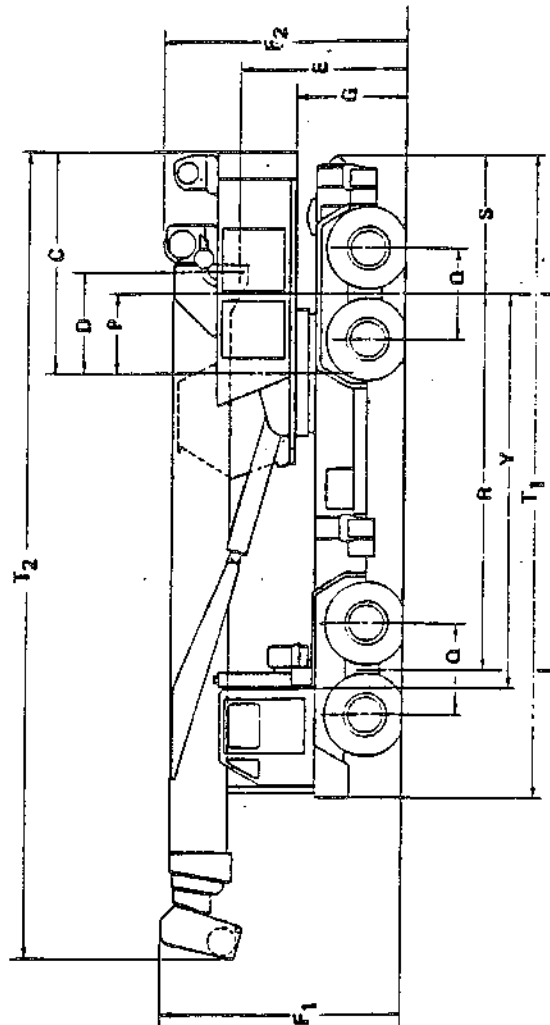
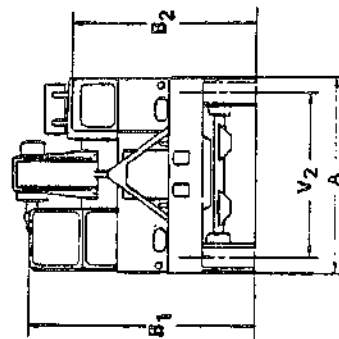
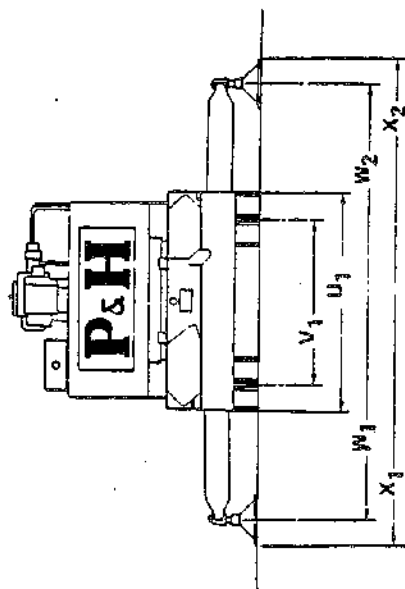


NOTE

All information on this page is for reference only, and subject to change without notice.

A	- WIDTH OF REVOLVING SUPERSTRUCTURE	9'-9 1/2"
B ₁	- OVERALL HEIGHT (OPERATOR'S CAB)	11'-1 3/4"
B ₂	- OVERALL HEIGHT (CARRIER CAB)	9'-1 1/4"
C	- SWING CLEARANCE	11'-1"
D	- AXIS OF ROTATION TO BOOM FOOT PIN	5'-0"
E	- HEIGHT OF BOOM FOOT PIN ABOVE GRADE	8'-3"
F ₁	- MAX. HEIGHT - BOOM HEAD - TRAVEL POSITION	11'-11"
F ₂	- MAX. HEIGHT - WINCH - TRAVEL POSITION	11'-11 1/2"
G	- HEIGHT, COUNTERWEIGHT TO GRADE	5'-3"
P	- AXIS OF ROTATION TO CENTER OF REAR BOGIE	3'-11 3/4"
Q	- BETWEEN CENTERS OF AXLES	4'-8"
R	- WHEELBASE - CENTER OF BOGIES	18'-7 3/4"
S	- CENTER OF REAR BOGIE TO REAR END OF FRAME	6'-11 1/2"
T ₁	- OVERALL LENGTH OF CARRIER	31'-11 1/4"
T ₂	- OVERALL LENGTH OF MACHINE (BOOM RETRACTED)	40'-2 1/4"
U ₁	- MAX. OVERALL WIDTH - OUTRIGGERS RETRACTED	11'-0"
V ₁	- TREAD WIDTH - REAR AXLE	8'-4"
V ₂	- TREAD WIDTH - FRONT AXLE	8'-3 1/2"
W ₁	- LENGTH OUTRIGGERS EXTENDED - GROUND LEVEL	21'-11 1/2"
W ₂	- MAX. LENGTH, OUTRIGGERS EXTENDED	22'-0"
X ₁	- OVERALL WIDTH - OVER FLOATS - GROUND LEVEL	24'-5 1/2"
X ₂	- MAX. OVERALL WIDTH - OVER FLOATS	24'-6"
Y	- BACK OF CARRIER CAB TO REAR BOGIE (C A DIST.)	19'-7 1/4"



FRONT	WEIGHTS	REAR
38,000 LBS.	TOTAL	77,000 LBS.
	115,000 LBS.	

Figure 1-2. Dimensions and Clearances (105J723)

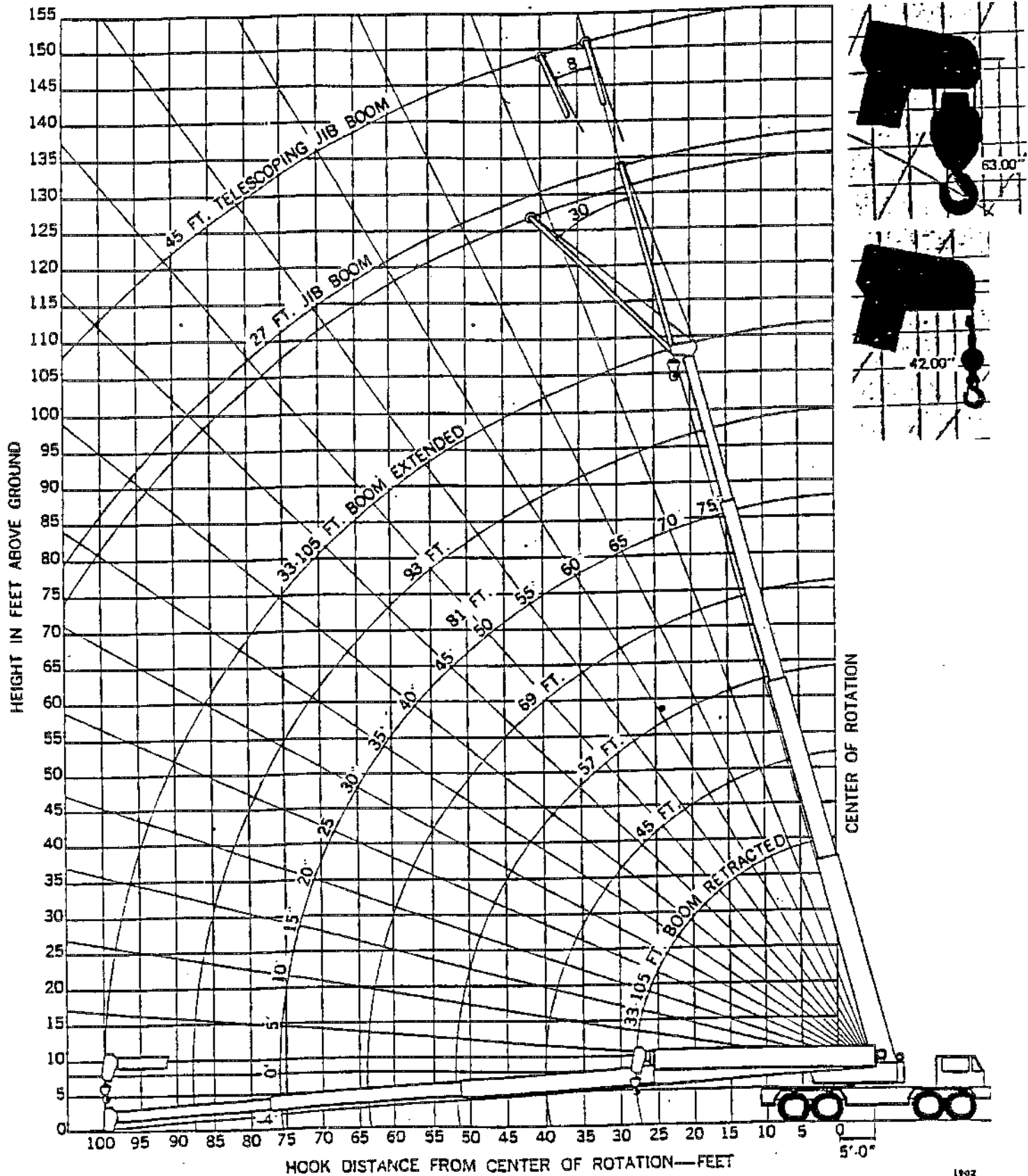


Figure 1-3. Boom Clearances

lifting capacities

75 TON CRANE (P&H)

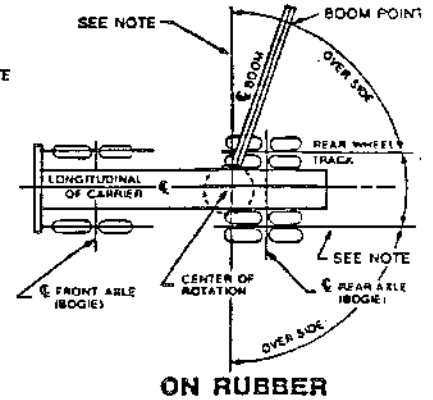
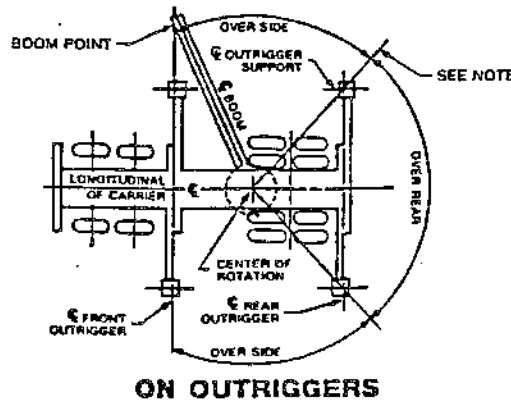
LOAD RATINGS IN POUNDS.														WITHOUT			
Rad. in Ft.	Over Side and Over Rear With Outriggers													OUTRIGGERS			
	Powered Boom Length in Feet													Over Side	Over Rear		
	33 Feet		45 Feet		57 Feet		69 Feet		81 Feet		93 Feet		105 Feet				
△	Lbs.	△	Lbs.	△	Lbs.	△	Lbs.	△	Lbs.	△	Lbs.	△	Lbs.	△	Lbs.		
12	60	150,000	69	90,000	75	83,000										40,000	50,000
15	54	120,000	65	86,000	71	80,000	75	74,000	75	*55,000						40,000	50,000
20	42	90,000	58	74,000	66	67,000	71	60,000	74	52,000	75	*40,000				24,500	32,000
25	25	66,000	50	62,000	60	56,000	66	50,000	71	44,000	74	38,000	75	*31,000		16,000	22,000
30			40	48,000	54	48,000	62	43,000	67	38,000	70	32,500	73	27,500		11,000	15,800
35			28	37,000	47	37,000	57	37,000	63	33,000	67	28,500	70	24,000		8,000	12,000
40					39	29,500	51	29,500	59	29,500	63	25,000	67	21,500		5,600	9,000
45					30	24,500	45	24,500	54	24,500	60	22,500	64	19,400		3,500	6,400
50							39	20,500	49	20,500	56	20,500	61	17,700		2,000	4,600
60									38	15,000	48	15,000	54	15,000		1,000	3,200
70											38	11,100	47	11,100		Do not exceed 60 ft.	
80											25	8,000	38	8,000		radius without the	
90													27	5,600		use of outriggers.	
100													1	4,200			

*Load ratings, for maximum 75° boom elevation, will be at longer radius than indicated.

MAX. JIB LOAD RATINGS IN POUNDS				
Min. Boom Angle	27 Foot Jib		45 Foot Jib	
	No Offset	30° Offset	No Offset	8° Offset
75°	10,000	5,200	5,000	3,800
73°	9,000	5,100	4,600	3,600
69°	8,000	4,950	4,000	3,250
66°	7,300	4,850	3,700	3,050
63°	6,800	4,750	3,450	2,900
60°	6,500	4,700	3,200	2,700
55°	6,000	4,550	2,900	2,500
50°	5,500	4,400	2,700	2,300
40°	5,000	4,150	2,500	2,100
30°	4,700	4,000	2,400	2,000

Maximum jib load ratings are based on structural competence. Jib load ratings at any radius shall not exceed the powered boom load ratings at the same radius, and shall not exceed maximum jib load ratings shown. For bucket ratings on jib, deduct 20% from maximum jib load ratings. Maximum jib operating radius shall not exceed the operating radius of the powered boom for any given length setting. Use of the outriggers is recommended when boom is equipped with jib.

Operating radius is the horizontal distance from the axis of rotation, before loading, to the center of the vertical hoistline or tackle with loads applied. Boom angles shown are with rated loads applied and provide an approximation of the operating radius. For rated loads, do not exceed the specified operating radius. Crane load ratings are for machines with 12,000 pounds of counterweight and do not exceed 85% of the tipping loads. Ratings above the heavy line are based on the machine's hydraulic or structural competence and not on the machine stability. Weights of hooks, hook blocks, slings, and all other load handling devices, except the hoist rope, shall be considered a part of the load. Crane load ratings with outriggers are based on outriggers fully extended and set to a distance of 11 feet 0 inches from the longitudinal axis of the carrier to the outrigger float pivot connection and wheels within the boundary of the outriggers unloaded. Crane load ratings without outriggers depend on tire capacity and condition of tires inflated to 100 P.S.I.



AREAS OF OPERATION

NOTE
THESE LINES DETERMINE
THE LIMITING POSITION OF
ANY LOAD FOR OPERATION
WITHIN WORKING AREAS
INDICATED.

Crane load ratings are based on freely suspended loads with the machine leveled and standing on a firm, uniform supporting surface. Practical working loads depend on supporting surface, wind, and other factors affecting stability, hazardous surroundings, experience of personnel and proper handling, all of which must be taken into account by the operator. Positioning or operation at radii and boom or jib lengths beyond the maximums and minimums shown, is not intended or approved. For boom lengths not shown, use load ratings of next longer boom. With jib in operating position, main hook ratings shall be reduced by 2,500 pounds. The maximum load which may be telescoped is limited by hydraulic pressure, boom angle and boom lubrication. All sections of the boom must be telescoped equally. For 33 foot boom length ratings, telescope cylinder's must be fully retracted and against stops. Method of extension is independent or synchronous with each powered section extendible a distance of 24 feet.

HOIST REEVING												
P&H # 16 — Rope Diameter — 3/4 In. Breaking Strength — 51,800 Lbs.						P&H # 10-1 Rope Diameter — 9/16 In. Breaking Strength — 29,400 Lbs.						
PERMISSIBLE LINE LOAD IN POUNDS												
Parts Line	1	2	3	4	5	6	7	8	9	10	11	12
P&H #16	12,500	25,000	37,500	50,000	62,500	75,000	87,500	100,000	112,500	125,000	137,500	150,000
P&H #10-1	7,500	15,000	22,500	30,000	37,500	45,000						

PERMIT FOR KANSAS P&H 75 TON HYDRAULIC TRUCK CRANE



CRANE INFORMATION

UNIT NO.	C4
MAKE	P&H
MODEL	T-750
YEAR	1973
SER. NO.	35485
LENGTH	55'-0"
HEIGHT	12'-6"
WIDTH	11'-0"
TIRE SIZE.	STEER & DRIVE 14X20; DOLLY 10X20

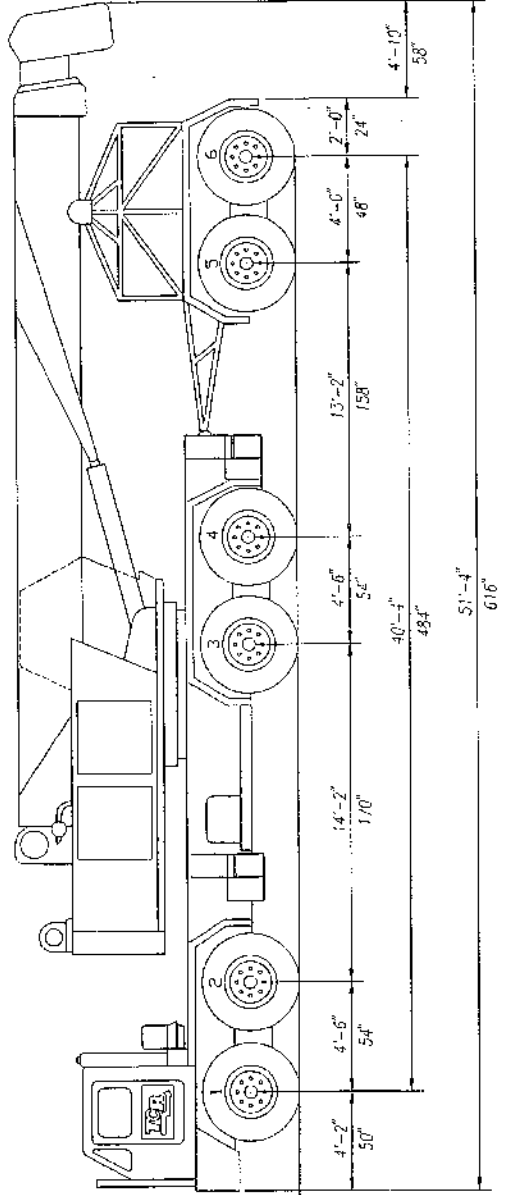
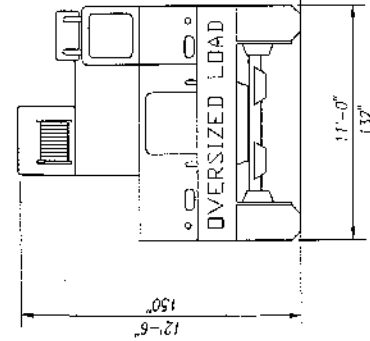
WEIGHT INFORMATION (LBS.)

GROSS WITH COUNTERWEIGHT	XXXXXX
GROSS W/O COUNTERWEIGHT	101,880
STEERING	37,260
DRIVERS	39,580
DOLLY	25,040

DR. BY:	J. GINGRAUX
REV. BY:	GLEN FLOOD
DATE:	12-6-94
CK. BY:	C. DONALDSON
FILE:	KS-C4

NOTES:

1. BOOM IS TOTALLY RETRACTED.
2. REAR OUTRIGGER BOX REMOVED.



PERMIT FOR MISSOURI P&H 75 TON HYDRAULIC TRUCK CRANE

CRANE INFORMATION

UNIT NO.	C4
MAKE	P&H
MODEL	T-750
YEAR	1973
SER. NO.	35485
LENGTH	55'-0"
HEIGHT	12'-6"
WIDTH	11'-0"
TIRE SIZE.	STEER & DRIVE 14X20; DOLLY 10X20

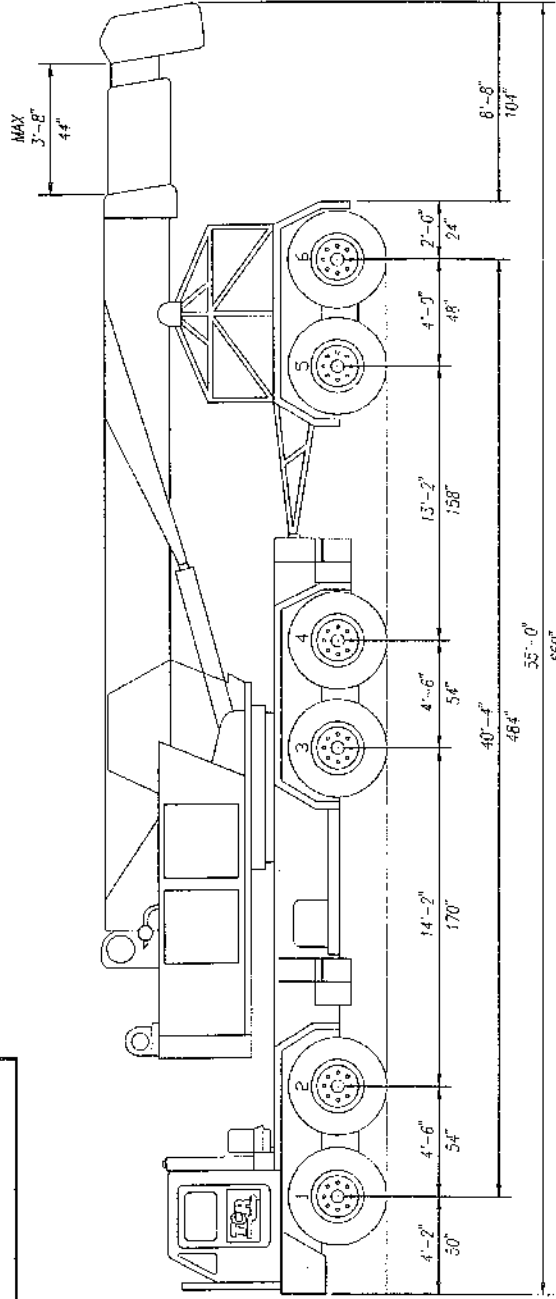
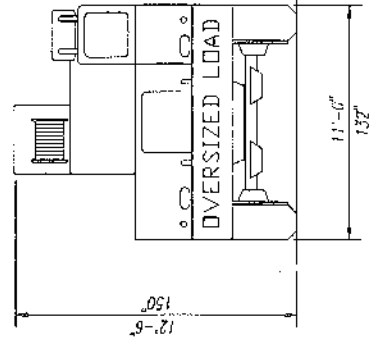
NOTES:

1. FRONT & REAR OUTRIGGERS REMOVED
2. FULL OF FUEL
3. ALL BOOM SECTIONS EXTENDED 40". (MAXIMUM LENGTH NOT TO EXCEED 55')
4. MUST INSERT DOLLY EXTENSION JIG
5. THE GROSS PERMITTABLE WEIGHT IN MISSOURI WITH 40'-6" WHEEL BASE 1ST AXLE TO LAST IS 98,125 LBS.

WEIGHT INFORMATION (LBS.)

GROSS WITH COUNTERWEIGHT	XXXXXX
GROSS W/O COUNTERWEIGHT	98,035
STEERING	34,375
DRIVERS	38,620
DOLLY	25,040

DR. BY: J. GINGRAUX
REV. BY: GLEN FLOOD
DATE: 12-6-94
CK. BY: C. DONALDSON
FILE: -MO-C4



FOR MISSOURI DO NOT EXCEED 55'-0"

680'