



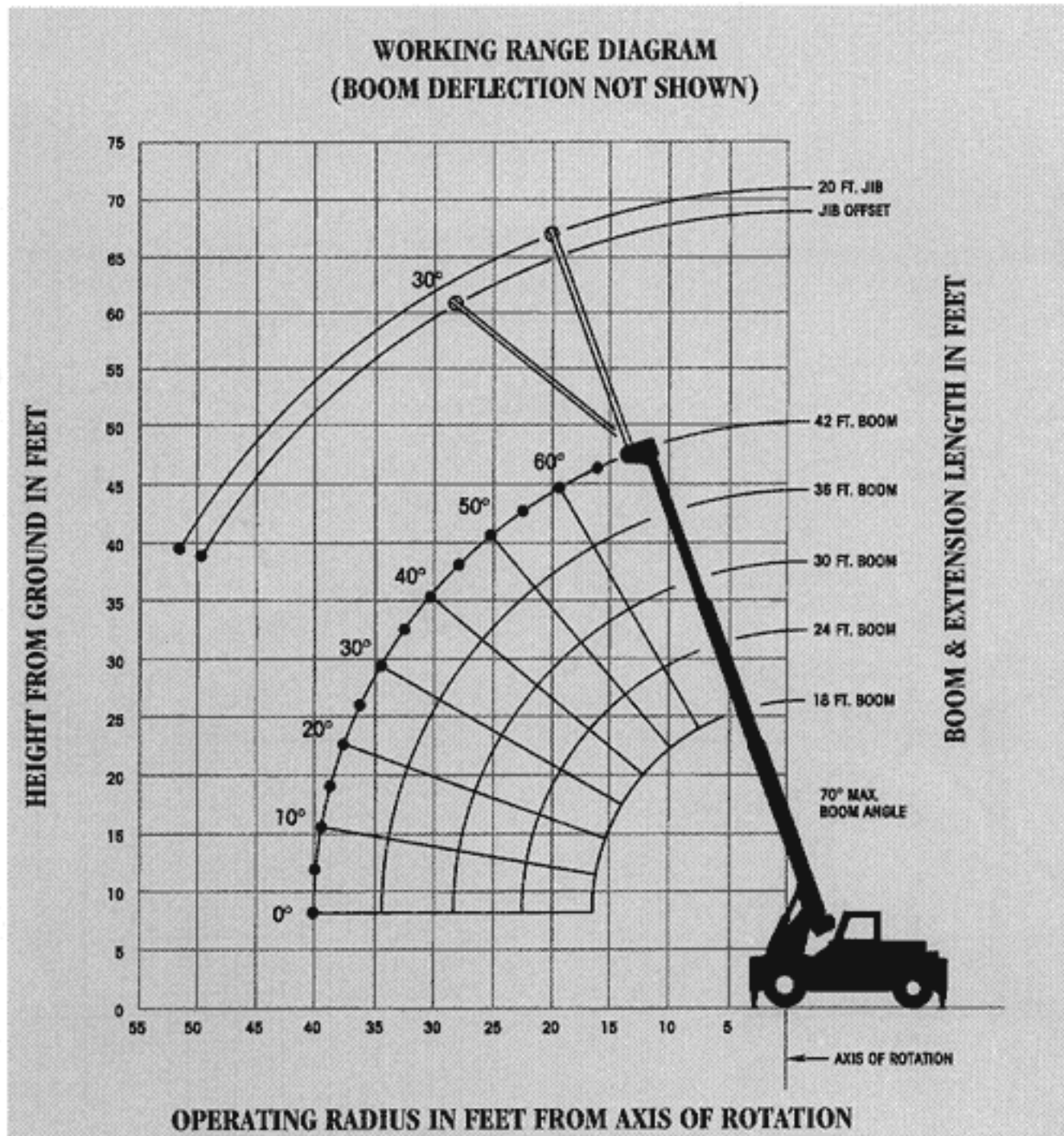
GROVE[®]
CRANE

A GROVE WORLDWIDE COMPANY

IND1012

Material handling hydraulic crane

Domestic 85%

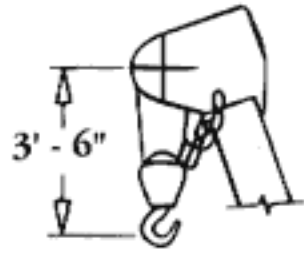
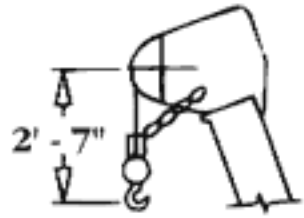


**1012 INDUSTRIAL 18 - 42 FT. BOOM
75% LIFTING CAPACITIES ON RUBBER
85% LIFTING CAPACITIES ON OUTRIGGERS**

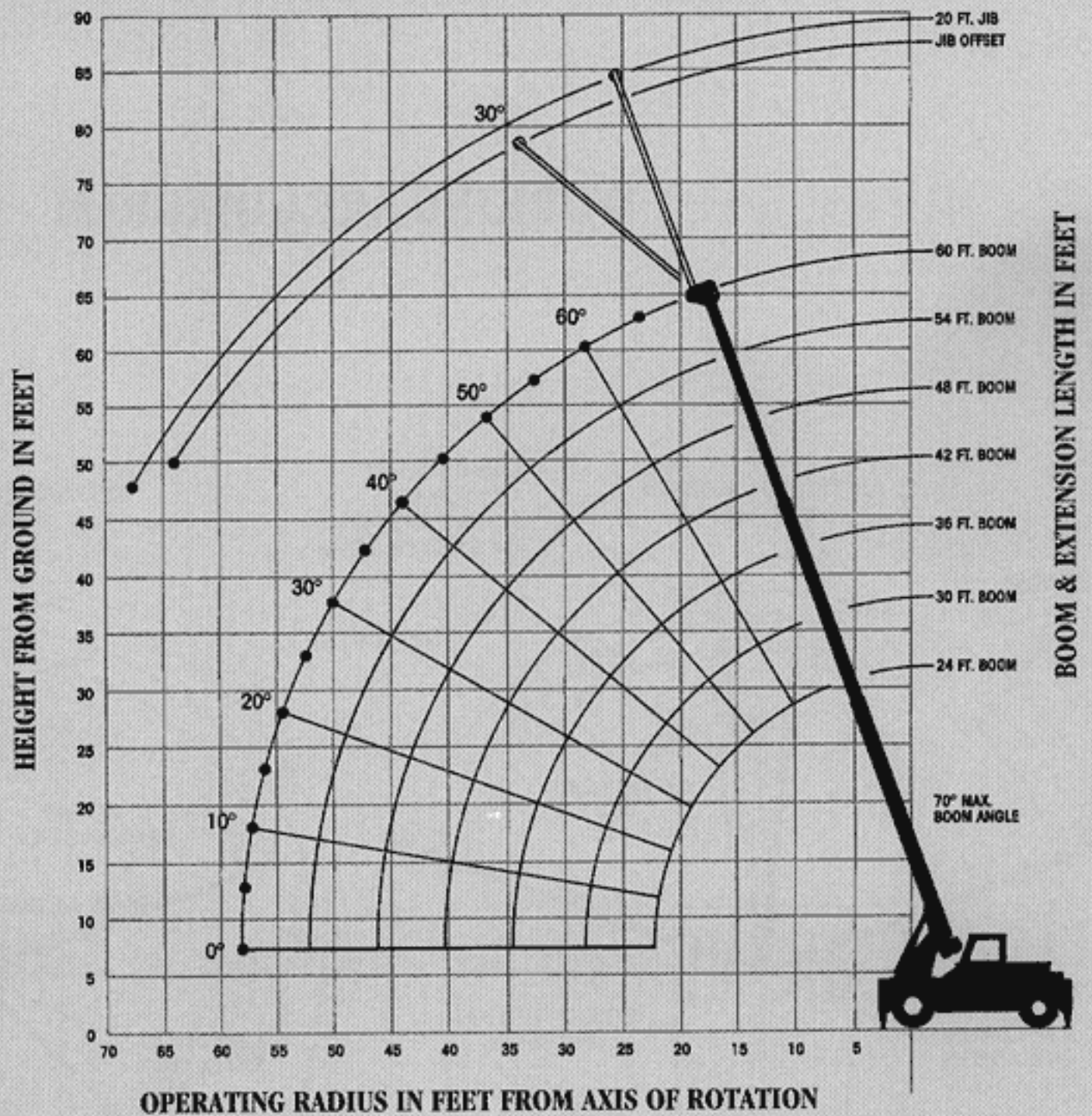
| Radius in Feet | #01 | #05** | #05 |
|----------------------|-------------------------------|-------------------|--------------|
| | On Outriggers (See Note 1) | On Rubber (3) (4) | |
| | | Front | Side 70° (2) |
| 6 | 35,000 | 30,000 | 22,700 |
| 8 | 32,400 | 24,500 | 16,400 |
| 10 | 30,000 | 18,800 | 11,200 |
| 12 | 27,500 | 15,850 | 8,820 |
| 15 | 23,750 | 11,900 | 6,610 |
| 20 | 17,500 | 8,020 | 4,140 |
| 25 | 12,000 | 5,020 | 2,730 |
| 30 | 9,000 | 3,350 | 1,730 |
| 35 | 6,800 | 2,470 | 1,140 |
| 40 | 5,300 | 2,020 | |

#LMI operating code. Refer to LMI manual for operating instructions.
**Select LMI operating code #06 for pick & carry operations.

**WORKING RANGE DIAGRAM
(BOOM DEFLECTION NOT SHOWN)**



DIMENSIONS ARE FOR LARGEST GROVE FURNISHED HOOK BLOCK AND HEADACHE BALL, WITH ANTI-TWO BLOCK ACTIVATED.



20 FT. JIB CAPACITIES

| MINIMUM BOOM ANGLE | #61 | #63 |
|--------------------|-----------|-------------------|
| | NO OFFSET | MAX. OFFSET (30°) |
| 75° | 6,200 | 2,600 |
| 70° | 5,000 | 2,400 |
| 65° | 4,300 | 2,300 |
| 60° | 3,700 | 2,150 |
| 55° | 3,300 | 2,100 |
| 50° | 2,600 | 1,650 |
| 45° | 2,400 | 1,500 |
| 40° | 2,200 | 1,460 |
| 30° | 1,900 | 1,200 |

#LMI operating code. Refer to LMI manual for operating instructions.

A6-829-000126B

**1012 INDUSTRIAL 24 - 60 FT. BOOM
75% LIFTING CAPACITIES ON RUBBER
85% LIFTING CAPACITIES ON OUTRIGGERS**

| Radius in Feet | #01 | #05** | #05 |
|----------------|----------------------------|-------------------|--------------|
| | On Outriggers (See Note 1) | On Rubber (3) (4) | |
| | | Front | Side 70° (2) |
| 6 | 35,000 | 30,000 | 22,700 |
| 8 | 32,400 | 24,500 | 16,400 |
| 10 | 30,000 | 18,800 | 11,200 |
| 12 | 27,500 | 15,850 | 8,820 |
| 15 | 23,750 | 11,900 | 6,610 |
| 20 | 17,500 | 8,020 | 4,140 |
| 25 | 12,000 | 5,020 | 2,730 |
| 30 | 9,000 | 3,350 | 1,730 |
| 35 | 6,800 | 2,470 | 1,010 |
| 40 | 5,300 | 2,020 | |
| 45 | 4,200 | 1,670 | |
| 50 | 3,200 | 1,230 | |
| 55 | 2,500 | 880 | |
| 59 | 1,700 | | |

#LMI operating code. Refer to LMI manual for operating instructions.

**Select LMI operating code #06 for pick & carry operations.

A6-829-009090B

NOTES FOR LIFTING CAPACITIES

WARNING: THIS CHART IS ONLY A GUIDE. The notes below are for illustration only and should not be relied upon to operate the crane. The individual crane's load chart, operating instructions and other instruction plates must be read and understood prior to operating the crane.

1. Capacities applicable through 270° of swing only, front and rear outriggers required. (See working area diagram.)
2. Rear axle lockouts must be set to maintain published capacities.
3. Rated capacities are based on a static lift on level ground.
4. For pick-and-carry loads, suitable reductions to front static capacities must be made to allow for terrain. Loads must be carried directly over the front of machine with shortest practical boom length. SPEED MUST NOT EXCEED 2.5 MPH.
5. The weights of all load-handling devices are considered part of the load lifted and suitable allowances for them should be made.
6. All rated loads have been tested to and meet minimum requirements of SAE J1063 OCT80 - Cantilevered Boom Crane Structures - Method of Test, and do not exceed 85% of the tipping load on outriggers (75% of the tipping load on rubber) as determined by SAE J765 OCT80 Crane Stability Test Code.
7. Capacities given do not include the weight of hookblocks, slings, auxiliary lifting equipment and load handling devices. Their weights MUST be added to the load to be lifted. When more than minimum required reeving is used, the additional rope weight shall be considered part of the load.
8. Capacities appearing above the bold line are based on structural strength and tipping should not be relied upon as a capacity limitation.
9. All capacities are for crane on firm, level surface. It may be necessary to have structural supports under the outrigger floats or tires to spread the load to a larger bearing surface.
10. When either boom length or radius or both are between values listed, the smallest load shown at either the next larger radius or boom length shall be used.
11. For outrigger operation, ALL outriggers shall be fully extended with tires raised free of ground before raising the boom or lifting loads.
12. Unless otherwise stated, capacities are with powered boom sections equally extended.

Constant improvement and engineering progress make it necessary that we reserve the right to make specification, equipment, and price changes without notice. Illustrations shown may include optional equipment and accessories and may not include all standard equipment.

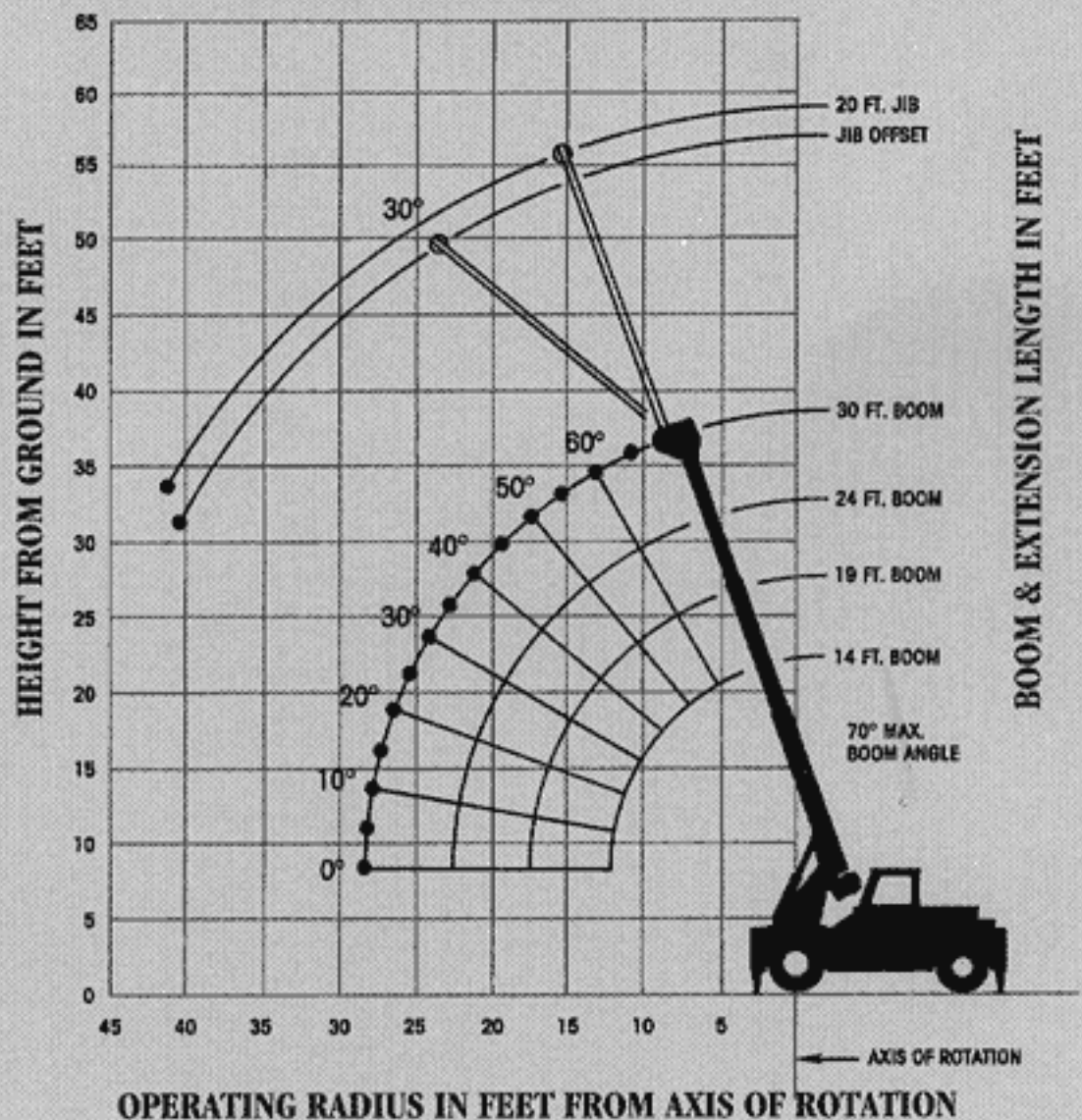


Grove Worldwide - World Headquarters
 1565 Buchanan Trail East
 Shady Grove, Pennsylvania 17256
 Phone: (717) 597-8121 Fax: (717) 597-4062

Grove North America
 P.O. Box 21, Shady Grove, Pennsylvania 17256
 Western Hemisphere, Asia/Pacific
 Phone: (717) 597-8121 Fax: (717) 597-4062

Grove Europe*
 Sunderland, England SR4 6TT
 Europe, Africa, Middle East, Near East
 Phone: (0191) 565-6281 FAX: (0191) 564-0442
 *Grove Europe Limited, Registered in England, Number 1845128, Registered office, Crown Works, Pallion, Sunderland, Tyne & Wear, England SR4 6TT.

**WORKING RANGE DIAGRAM
 (BOOM DEFLECTION NOT SHOWN)**



1012 INDUSTRIAL 14 - 30 FT. BOOM 75% LIFTING CAPACITIES ON RUBBER 85% LIFTING CAPACITIES ON OUTRIGGERS

| Radius in Feet | #01 On Outriggers (See Note 1) | #05** On Rubber (3) (4) | |
|----------------|--------------------------------------|----------------------------|--------------|
| | | Front | Side 70° (2) |
| 6 | 35,000 | 30,000 | 22,700 |
| 8 | 32,400 | 24,500 | 16,400 |
| 10 | 30,000 | 18,800 | 11,200 |
| 12 | 27,500 | 15,850 | 8,820 |
| 15 | 23,750 | 11,900 | 6,610 |
| 20 | 17,500 | 8,020 | 4,140 |
| 25 | 12,000 | 5,020 | 2,730 |
| 28 | 9,600 | 3,520 | 1,850 |

#LMI operating code. Refer to LMI manual for operating instructions.
 **Select LMI operating code #06 for pick & carry operations.

A6-829-008946B

WEIGHT REDUCTIONS FOR LOAD HANDLING DEVICES

| 20 ft. JIB | |
|-------------------------------------|----------|
| Erected - | 810 lbs. |
| HOOKBLOCK AND HEADACHE BALL: | |
| 20 Ton, 3 Sheave | 400 lbs. |
| 5 Ton Headache Ball | 172 lbs. |

WORKING AREA DIAGRAM

