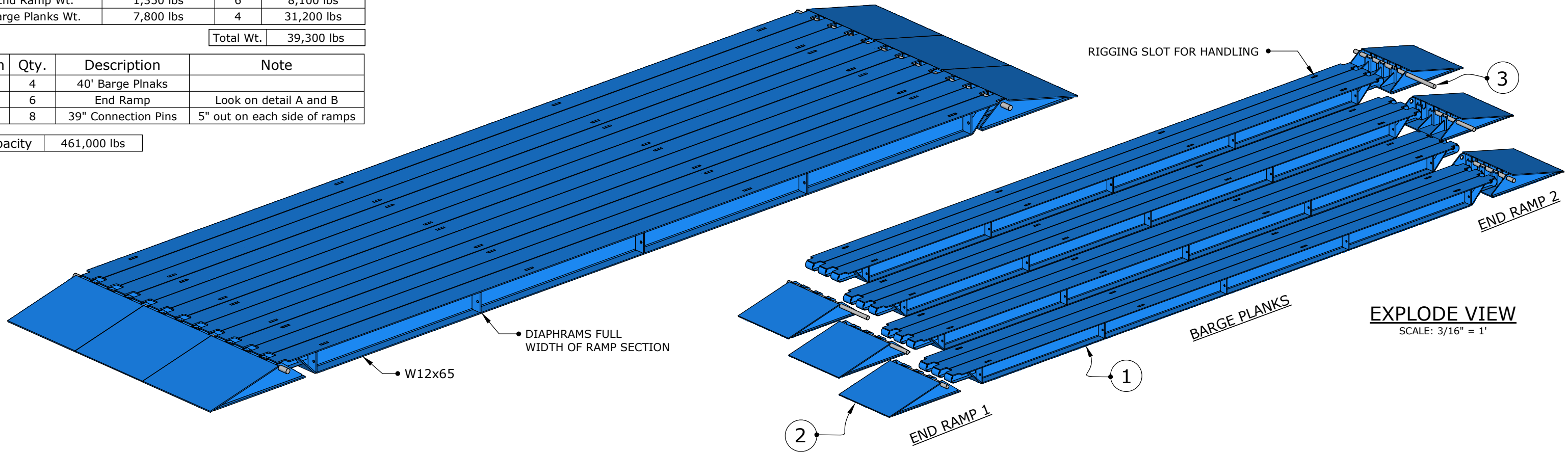


Description	Induivial Wt.	Qty.	Weight
End Ramp Wt.	1,350 lbs	6	8,100 lbs
Barge Planks Wt.	7,800 lbs	4	31,200 lbs

Total Wt.	39,300 lbs
-----------	------------

Item	Qty.	Description	Note
1	4	40' Barge Plnaks	
2	6	End Ramp	Look on detail A and B
3	8	39" Connection Pins	5" out on each side of ramps

Capacity	461,000 lbs
----------	-------------

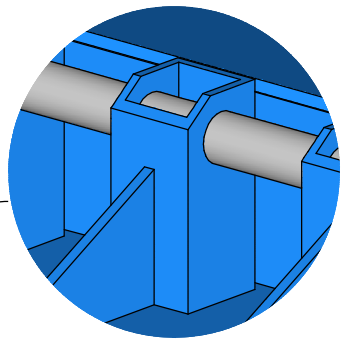


ASSEMBLED VIEW

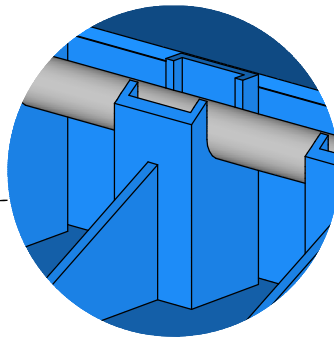
SCALE: 1/4" = 1'

EXPLODE VIEW

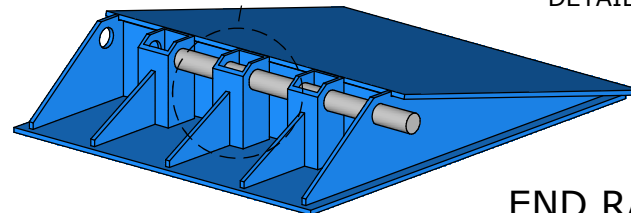
SCALE: 3/16" = 1'



DETAIL A

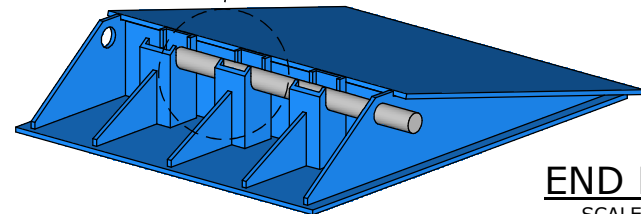


DETAIL B



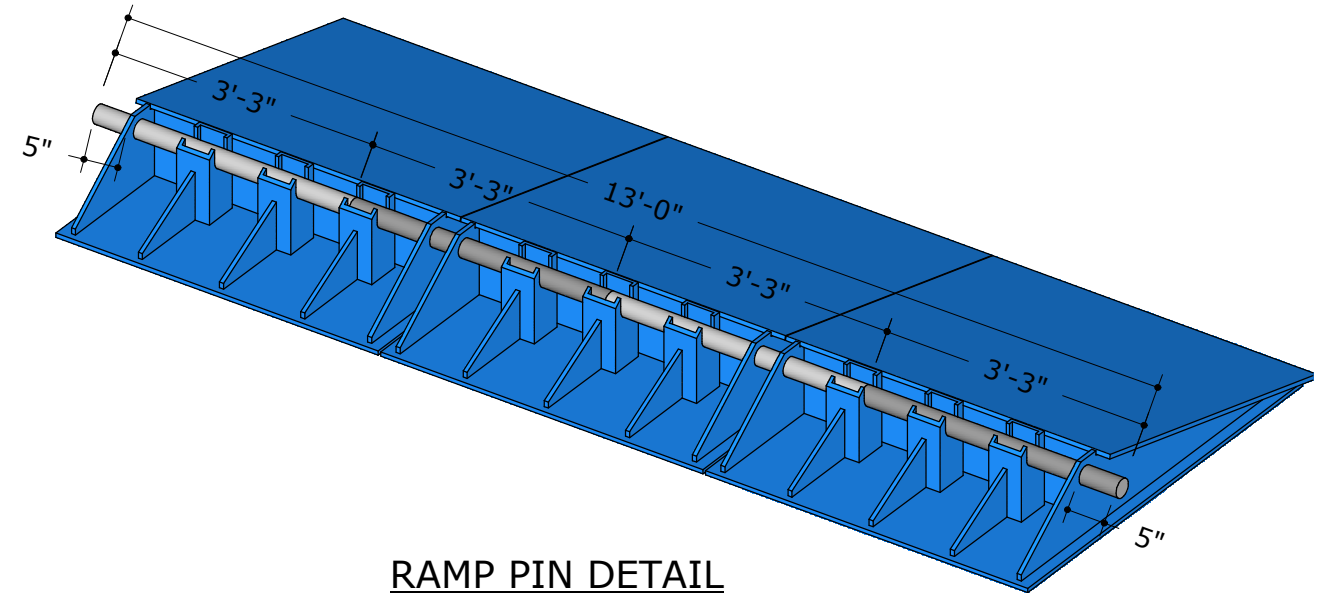
END RAMP 1

SCALE: 1/2" = 1'



END RAMP 2

SCALE: 1/2" = 1'



RAMP PIN DETAIL

SCALE: 1/2" = 1'

Date:
April 04, 2019

Drawn by:
V. Despotovic

Paper Size:
11" X 17"

Scale:

Drawing Title:

Drawing Status:
PRELIMINARY

Checked by:

Job Number:
991000

Sheet Number:
1/2

Rev No.

Revision Text

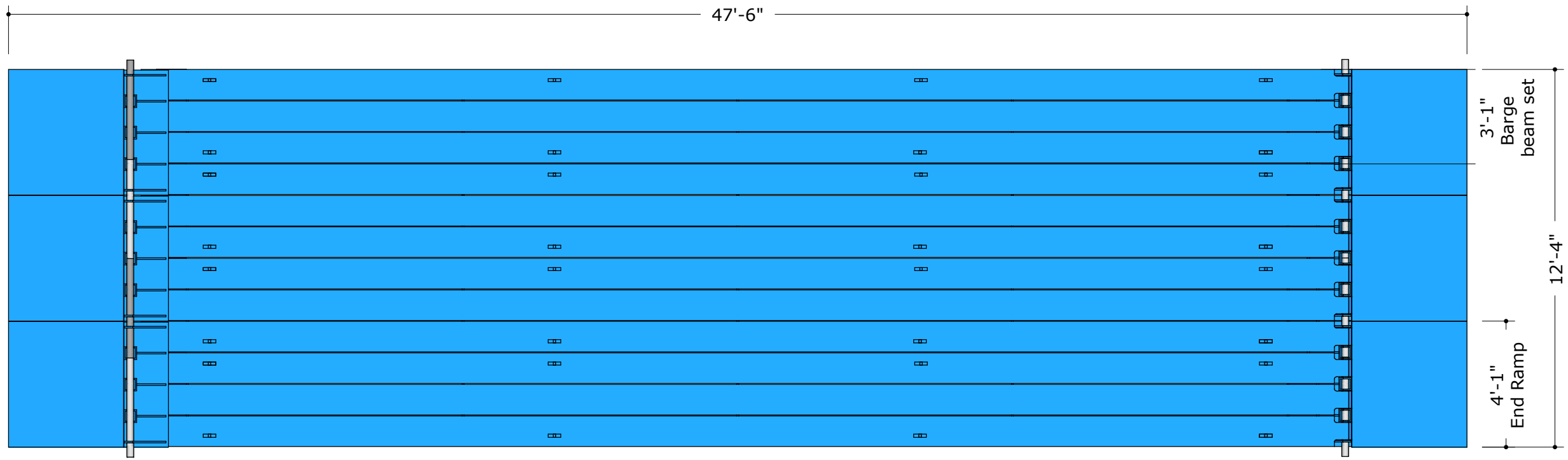
Revision Date

Barge Ramp

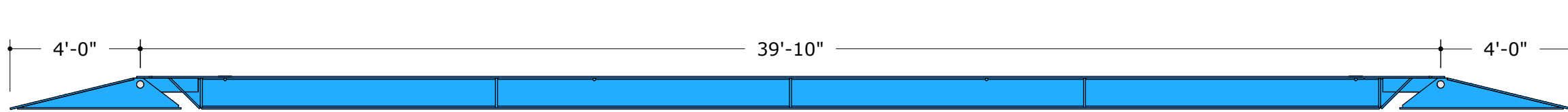
TAYLOR
CRANE & RIGGING

1211 W 12th St.
Coffeyville, Ks 67337
(620) 251-1530

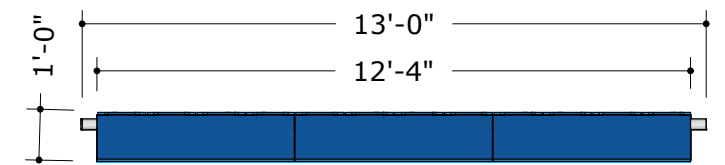
1919 N Garnett Rd,
Tulsa, OK 74116
(918) 439-4000



TOP VIEW



SIDE VIEW



END VIEW

Description	Induvidial Wt.	Qty.	Weight
End Ramp Wt.	1,350 lbs	6	8,100 lbs
Barge Planks Wt.	7,800 lbs	4	31,200 lbs

Total Wt.	39,300 lbs
-----------	------------

Item	Qty.	Description	Note
1	4	40' Barge Plnaks	
2	6	End Ramp	Look on detail A and B
3	8	39" Connection Pins	5" out on each side of ramps

Capacity	461,000 lbs
----------	-------------

Date:
March 30, 2019

Drawn by:
V. Despotovic

Paper Size:
11" X 17"

Scale:

Drawing Title:

Drawing Status:
PRELIMINARY

Checked by:

Job Number:
991000

Sheet Number:
2/2

Rev No.

Revision Text

Revision Date

Barge Ramp

TAYLOR
CRANE & RIGGING

1211 W 12th St. Coffeyville, Ks 67337 (620) 251-1530
1919 N Garnett Rd, Tulsa, OK 74116 (918) 439-4000