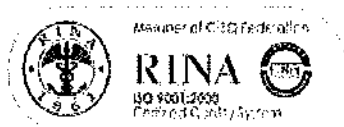
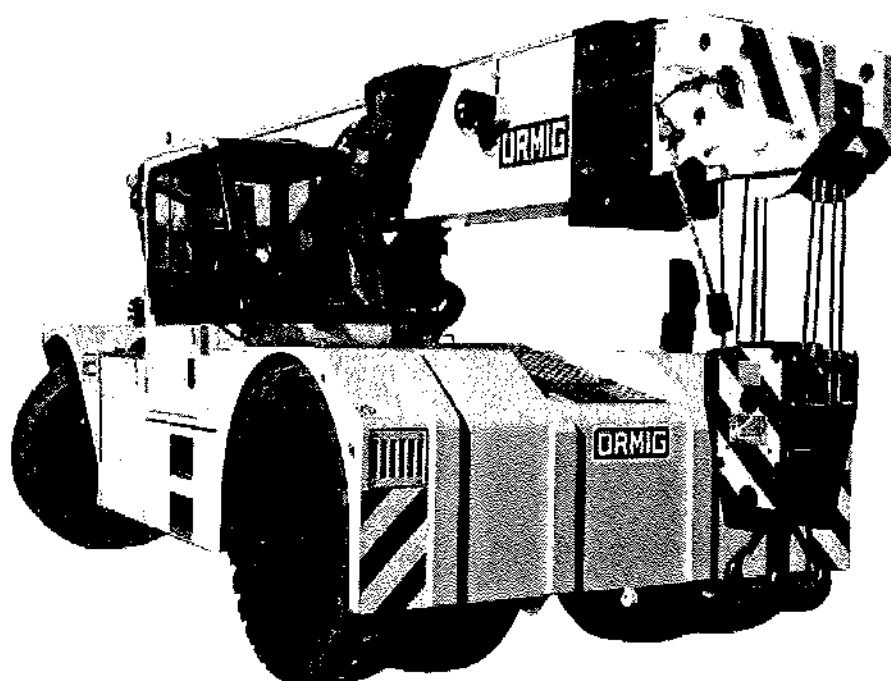


ORMIG

since 1949

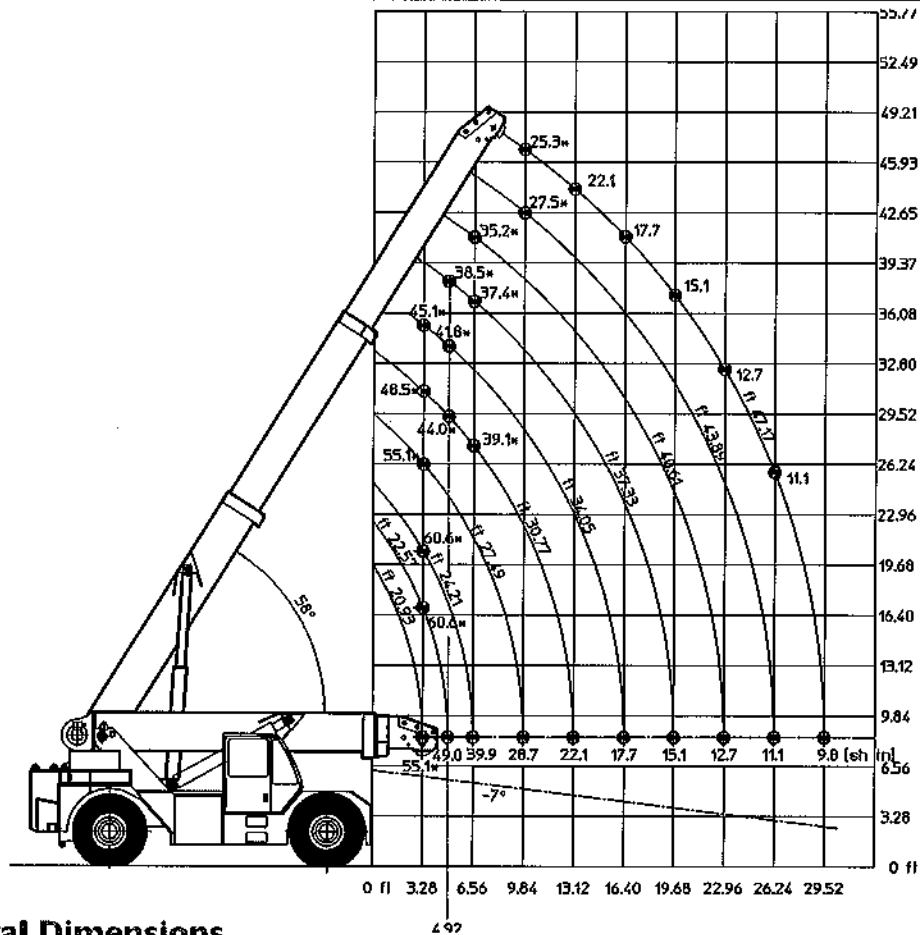


50/55 tm

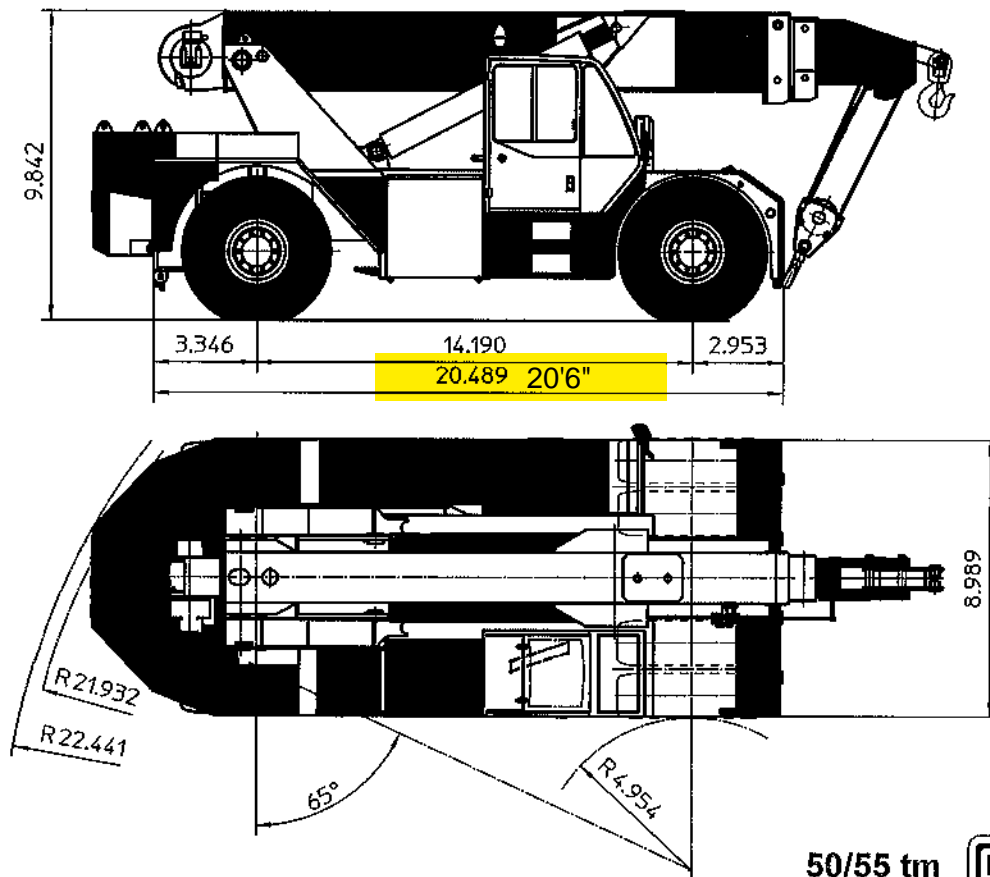
TECHNICAL FEATURES

Carrier	4 x 2 x 2	Boom	Fabricated from box-type plate at high strength. It is connected to the frame by means of rear gantry. Telescopic boom with a base section and two extensions at independent hydraulic extraction control. Extensions extraction by means of two double acting cylinders. Derricking is provided through two double action cylinders.
Frame	Monolithic structure formed by two frame side members with high flexural and torsional rigidity connected in the front and rear part in the position of the front axle and of the rear gantry location.	Winch	Oleodynamic with automatic brake. Adjustable speed from 0 to 60 m/min, with 5500 daN capacity at 5th layer single rope; rope diameter 17 mm type antiturn with length of about 142 meters.
Engine	FPT type NEF N 67 displacement 6728 cc power 210 kW (286 HP) at 2200 rpm, torque 1150 Nm at 1500 rpm. EUROMOT IV at electronic control. Liquid cooling. Fuel tank capacity 300 liters. Urea tank capacity 40 liters.	Hydraulic system	Fed by a variable delivery pump with electro-proportional distributor; compensated and anti-saturated. Electronic keysender with four proportional operations. Hydraulic oil tank capacity 360 litres.
Speed gearbox	Transmission with ZF torque converter; type 4 VVG 211 Ergopower transmissions with 4 forward and 3 reverse speeds. Hand operated or automatic control with electronic control. Max speed about 25 km/h.	Safe load device	Electronic - active type - with locking of the operations which can cause dangerous conditions when reaching the max crane capacity.
Axles	Driving front axle with differential-gear rigid suspension. Steering rear axle, central oscillation with limit switches is provide.	Safety regulations	The crane is equipped with all safety devices as per regulations in force. It complies with the requirements of Directive 2006/42/CE "Machine Directive" and to the EN 130001. Structure according to regulation EN 13001. Declaration of conformity CE.
Tyres	Twin tyres in the front axle and single tyres in the rear axle, type 16.00-R 25 32 PR.	Road certification	The crane is certified as exceptional operating vehicle according to D.L. 282 of 30/04/92 n° 282 and D.M. of 14/06/85.
Steering	Hydraulic steering, DANFOSS system, controlling the hydraulic cylinder connected to the cylinders levers. Outer turning circle radius 6.79 m. System with hydraulic pump emergency ZF constant flow connected to the front wheels.	Weight on road	Total weight 28000 kg. 62000 lb
Brakes	In compliance with EEC regulations for road travel, at hydraulic control powered by dedicated hydraulic pump. Multiple disc at oil bath in the front axle; dry disc at rear axle. Two independent circuits. Mechanical parking brake, spring-type acting in the transmission at front axle input controlled by electric switch	Equipment on request	<ul style="list-style-type: none"> • Auxiliary counterweight • Various lengths special fly-jibs • Fix hook at the boom top • Spare wheel
Cab	Steel structure, right side. Wide visibility for the operator is provided. It is complete with rearview mirrors, instrumentation, windshield wipers, heater, adjustable ergonomic seat. The various movements are controlled by levers equipped with electrical device against unforeseen operations.		
Electric system	24 V - 1680 W alternator; 2 batteries of 12V 180 Ah.		

Din 15019.2 Lifting capacity chart (short tonnes)



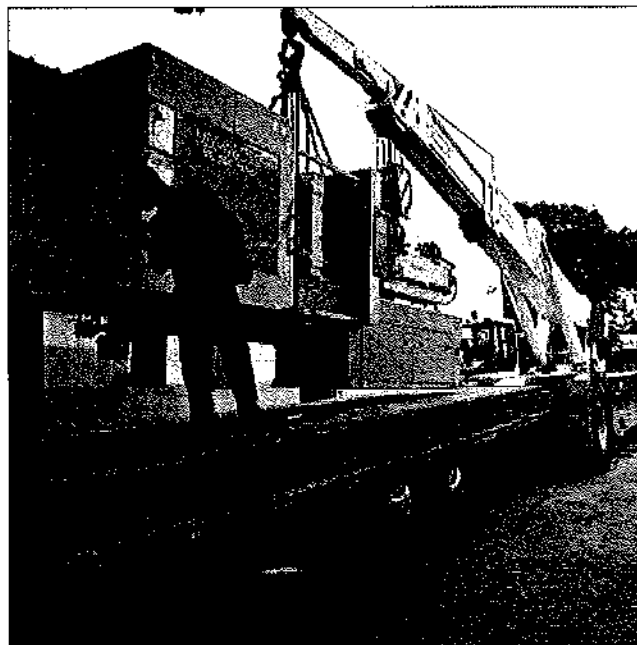
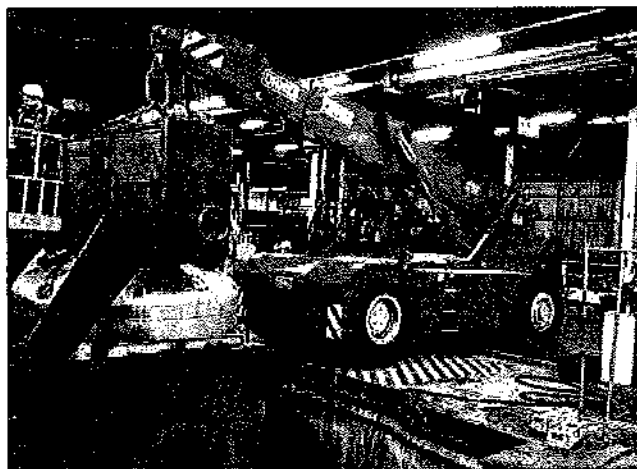
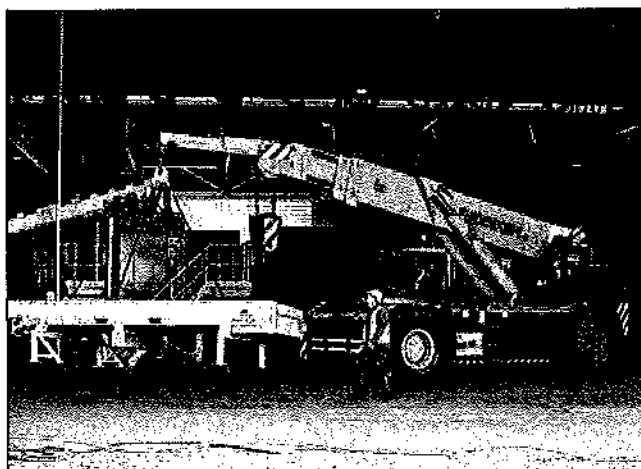
General Dimensions



It's ORMIG right to amend or improve the specification without notice and responsibility.

50/55 tm





TEL. (+39) 0143 80051
 FAX (+39) 0143 86568
 E-mail: mktg@ormigspa.com
 E-mail: sales@ormigspa.com
www.ormig.com - www.pickandcarry.com

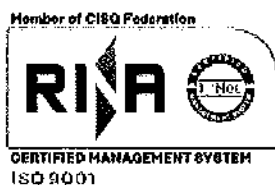
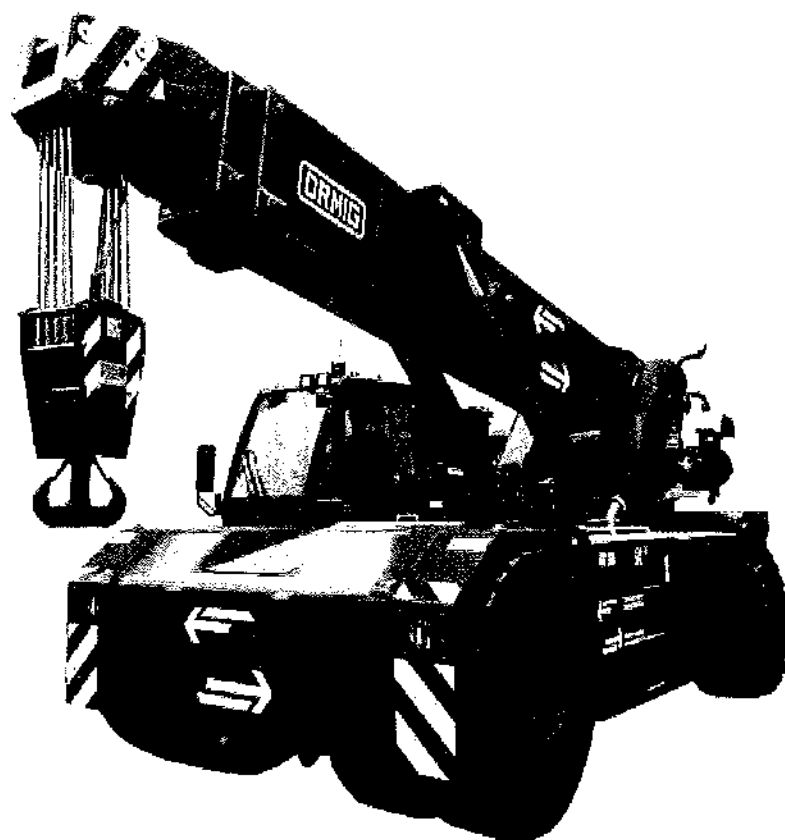
ORMIG S.p.A.
 PIAZZALE ORMIG
 15076 OVADA (AL)
 ITALY



The history of the lifting from 1949

70 1949 - 2019

ORMIG



50/55 tm

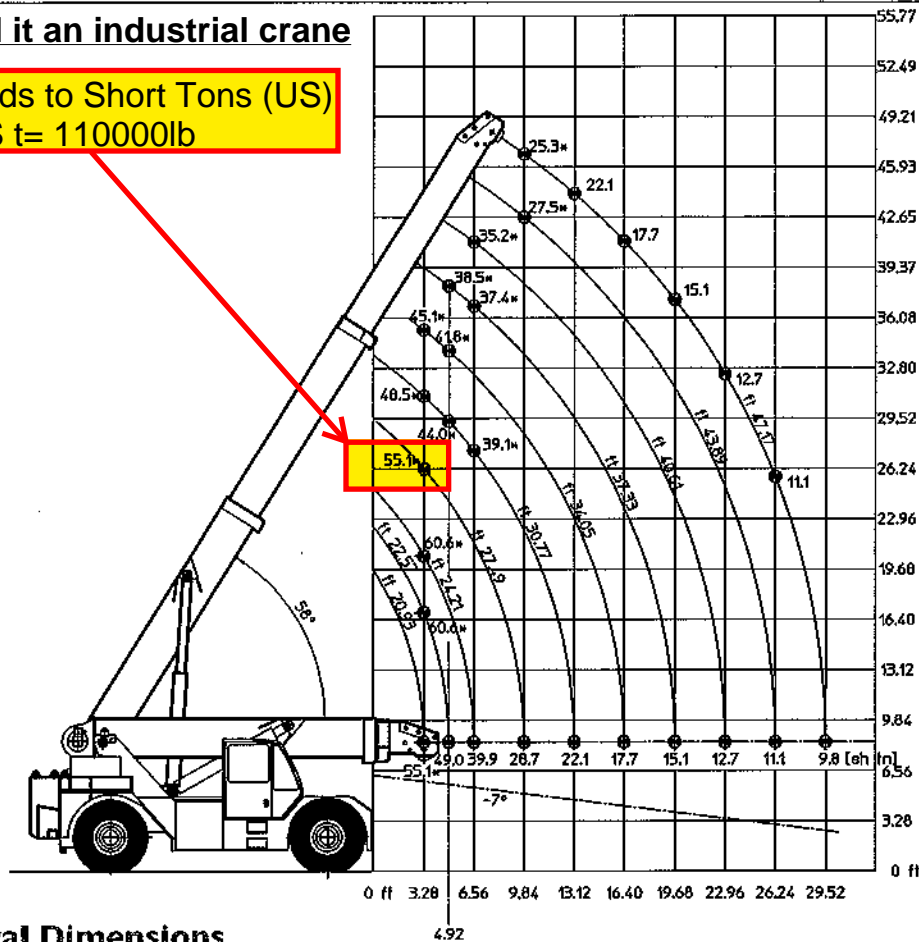
TECHNICAL FEATURES

Carrier	4 x 2 x 2	Boom	Fabricated from box-type plate at high strength. It is connected to the frame by means of rear gantry. Telescopic boom with a base section and two extensions at independent hydraulic extraction control. Extensions extraction by means of two double acting cylinders. Derricking is provided through two double action cylinders.
Frame	Monolithic structure formed by two frame side members with high flexural and torsional rigidity connected in the front and rear part in the position of the front axle and of the rear gantry location.	Winch	Oleodynamic with automatic brake. Adjustable speed from 0 to 60 m/min, with 5500 daN capacity at 5th layer single rope; rope diameter 17 mm type antiturn with length of about 142 meters.
Engine	FPT type NEF N 67 displacement 6728 cc power 210 kW (286 HP) at 2200 rpm, torque 1150 Nm at 1500 rpm. EUROMOT IV at electronic control. Liquid cooling. Fuel tank capacity 300 liters. Urea tank capacity 40 liters.	Hydraulic system	Fed by a variable delivery pump with electro-proportional distributor; compensated and anti-saturated. Electronic keysender with four proportional operations. Hydraulic oil tank capacity 360 litres.
Speed gearbox	Transmission with ZF torque converter, type 4 WG 211 Ergopower transmissions with 4 forward and 3 reverse speeds. Hand operated or automatic control with electronic control. Max speed about 25 km/h.	Safe load device	Electronic - active type - with locking of the operations which can cause dangerous conditions when reaching the max crane capacity.
Axles	Driving front axle with differential-gear rigid suspension. Steering rear axle, central oscillation with limit switches is provide.	Safety regulations	The crane is equipped with all safety devices as per regulations in force. It complies with the requirements of Directive 2006/42/CE "Machine Directive" and to the EN 130001. Structure according to regulation EN 13001. Declaration of conformity CE.
Tyres	Twin tyres in the front axle and single tyres in the rear axle, type 16.00-R 25 32 PR.	Road certification	The crane is certified as exceptional operating vehicle according to D.L. 282 of 30/04/92 n° 282 and D.M. of 14/06/85.
Steering	Hydraulic steering, DANFOSS system, controlling the hydraulic cylinder connected to the cylinders levers. Outer turning circle radius 6.79 m. System with hydraulic pump emergency ZF constant flow connected to the front wheels.	Weights	Standard crane total weight: approx 30.856 sh tn front axle: approx 15.208 sh tn rear axle: approx 15.648 sh tn
Brakes	In compliance with EEC regulations for road travel, at hydraulic control powered by dedicated hydraulic pump. Multiple disc at oil bath in the front axle; dry disc at rear axle. Two independent circuits. Mechanical parking brake, spring-type acting in the transmission at front axle input controlled by electric switch	Equipment on request	<ul style="list-style-type: none"> • Auxiliary counterweight • Various lenghts special fly-jibs • Fix hook at the boom top • Spare wheel
Cab	Steel structure, right side. Wide visibility for the operator is provided. It is complete with rearview mirrors, instrumentation, windshield wipers, heater, adjustable ergonomic seat. The various movements are controlled by levers equipped with electrical device against unforeseen operations.		
Electric system	24 V - 1680 W alternator; 2 batteries of 12V 180 Ah.		

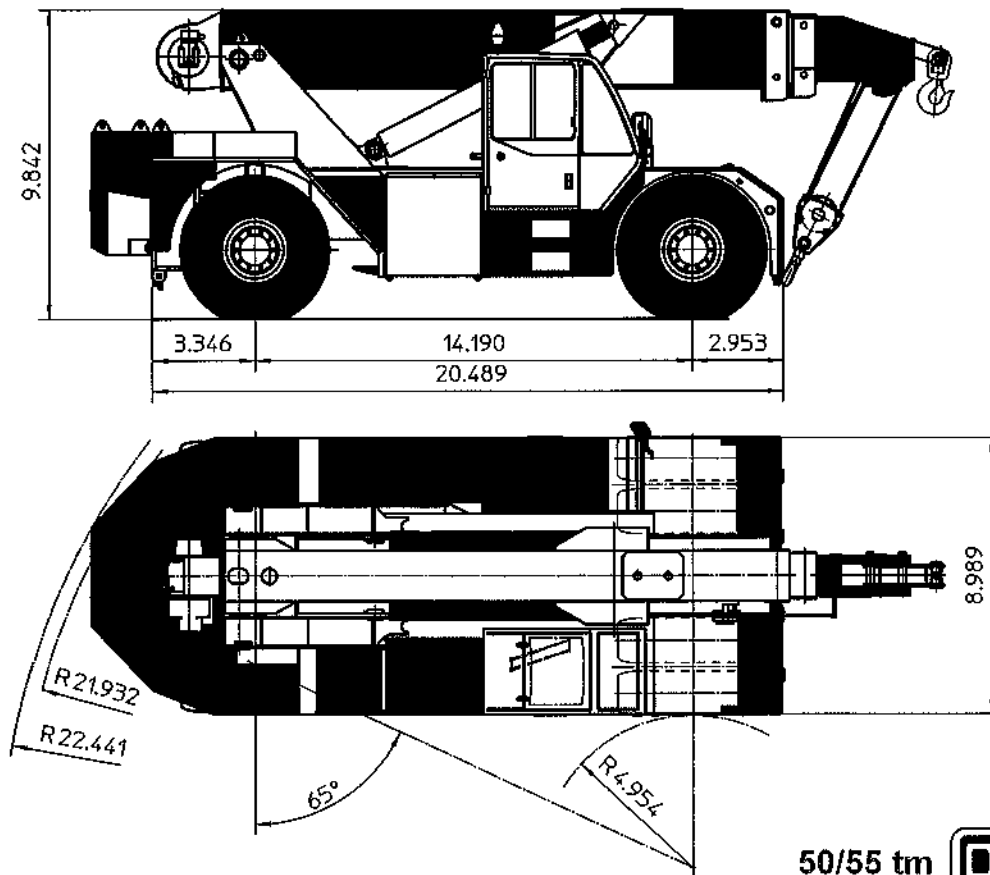
Din 15019.2 Lifting capacity chart (short tonnes)

Jim likes to call it an industrial crane

Pounds to Short Tons (US)
55US t= 110000lb



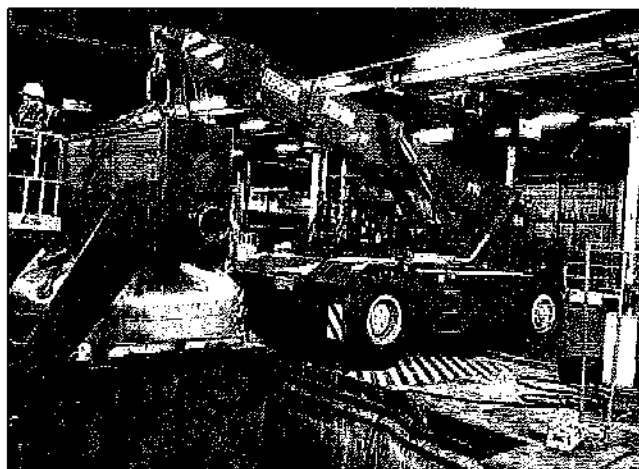
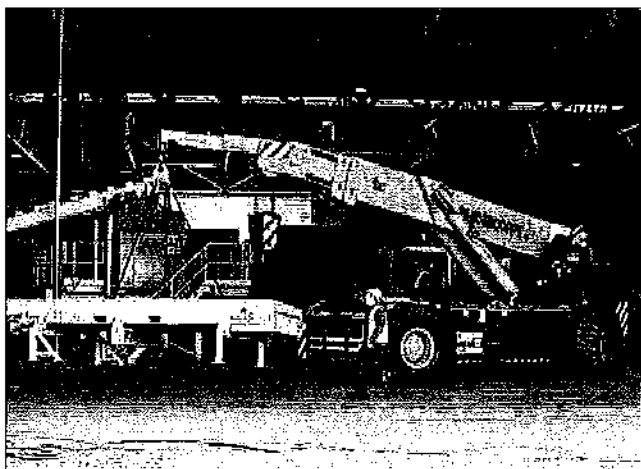
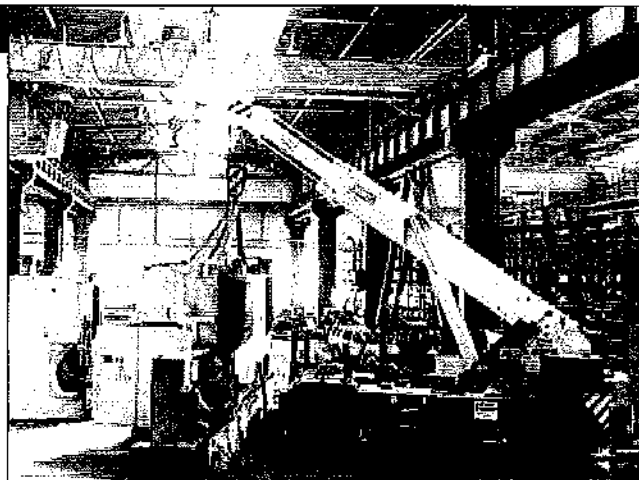
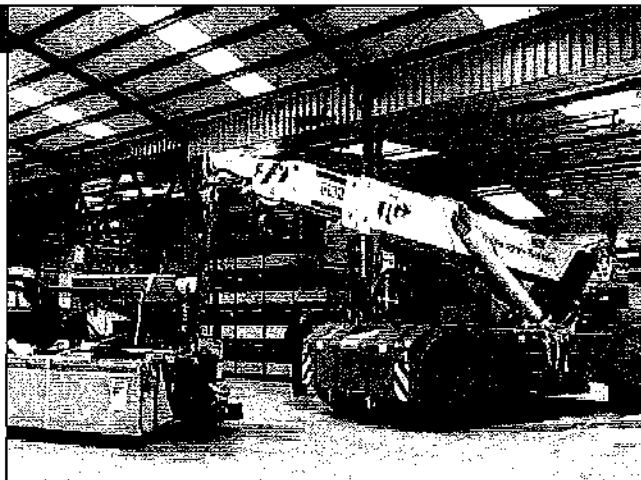
General Dimensions



50/55 tm



It's ORMIG right to amend or improve the specification without notice and responsibility.



TEL. (+39) 0143 80051
 FAX (+39) 0143 86568
 E-mail: mktg@ormigspa.com
 E-mail: sales@ormigspa.com
www.ormig.com - www.pickandcarry.com

ORMIG S.p.A.
 PIAZZALE ORMIG
 15076 OVADA (AL)
 ITALY



The history of the lifting from 1949



FABBRICA AUTOGRU
CRANES MANUFACTURER
FABRICANT DE GRUES
KRANEN HERSTELLER

O.R.M.I.G. S.p.A. - Cap. Soc. € 1.638.000 i.v.
Direzione e Stabilimenti: Piazzale Ormig
Regione Carlovini 12/A - 15076 OVADA (AL) - ITALIA
Tel. (+39) 0143 80051 r.a. - Fax (+39) 0143 86568
C.F. - P. IVA IT 00167880061
REA AL 47191 - Sede Legale Ovada - Reg. Imprese AL 00167880061

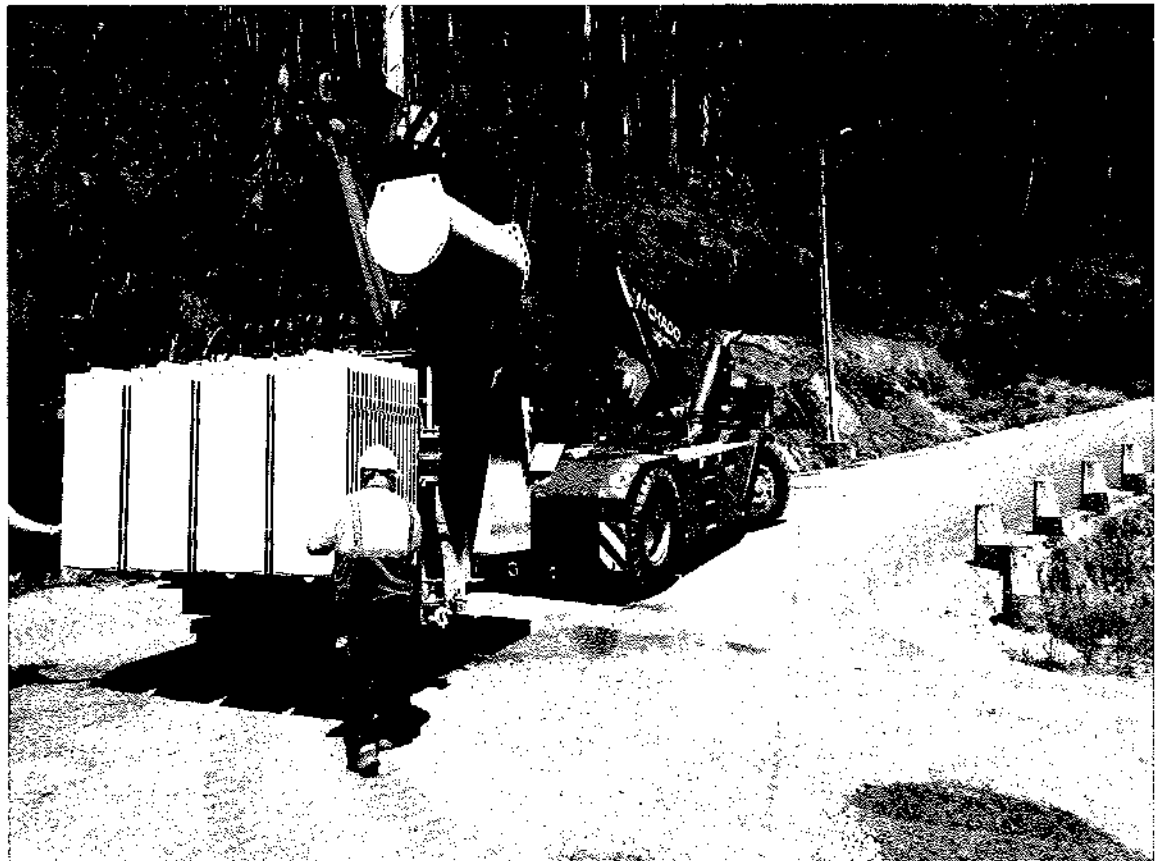
Messrs.
Taylor Cranes & Rigging
USA

February 17th, 2020

OFFER NO. 023/2020/EXPORT

1 OFF - ORMIG MOBILE YARD CRANE MOD. 50-55 TM - 55 tonnes max lifting capacity

"PICK AND CARRY"





OFFER NO. 023/2020/Exp

50-55TM

Page 2 of 2

February 17th, 2020

Ormig carrier - 4 x 2 x 2 drive

Side driving cab with wide visibility of working field, full instrumentation - controls equipped with electrical device against unexpected operations.

Oleodynamic winch with automatic brake.

Driving front axle with differential-gear, rigid suspension.

Telescopic boom with a base section and two extensions at independent hydraulic extraction control.

Twin tyres in the front axle and single tyres in the rear axle.

The crane is in compliant with Machine Directive 2006/42/CE and EN 13000.

Structures as per EN 13001.

Toolkit and Ormig manuals in English language

STANDARD CRANE EQUIPPED WITH:

- electronic safe load device, CE mark on the crane
- closed cab with full controls
- hydraulic winch
- mechanical jib two position with block
- hook at the boom top
- extra counterweights

PRICE,

EUR 350.000,00

DELIVERY PLACE: Conexpo 2020 – Las Vegas USA

PAYMENT: 30% at the order,
70% at advice of crane ready for transport.

GUARANTEE: 1 year from delivery.

The guarantee covers the replacement or repair, ex-factory Ovada, of the parts which are proved to be defective, provided the use and maintenance instructions are carefully followed.

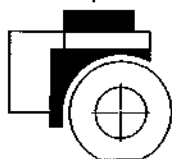
The wear parts are not covered by any guarantee.

50/55tm

ORMIG

129287-1

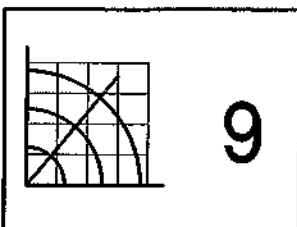
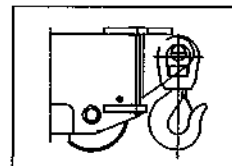
1+2+3+4+5



m

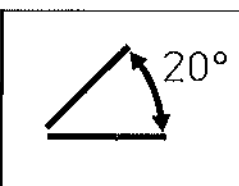


6,38 – 14,38

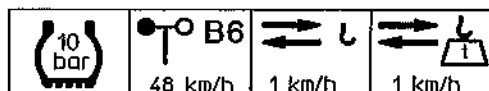
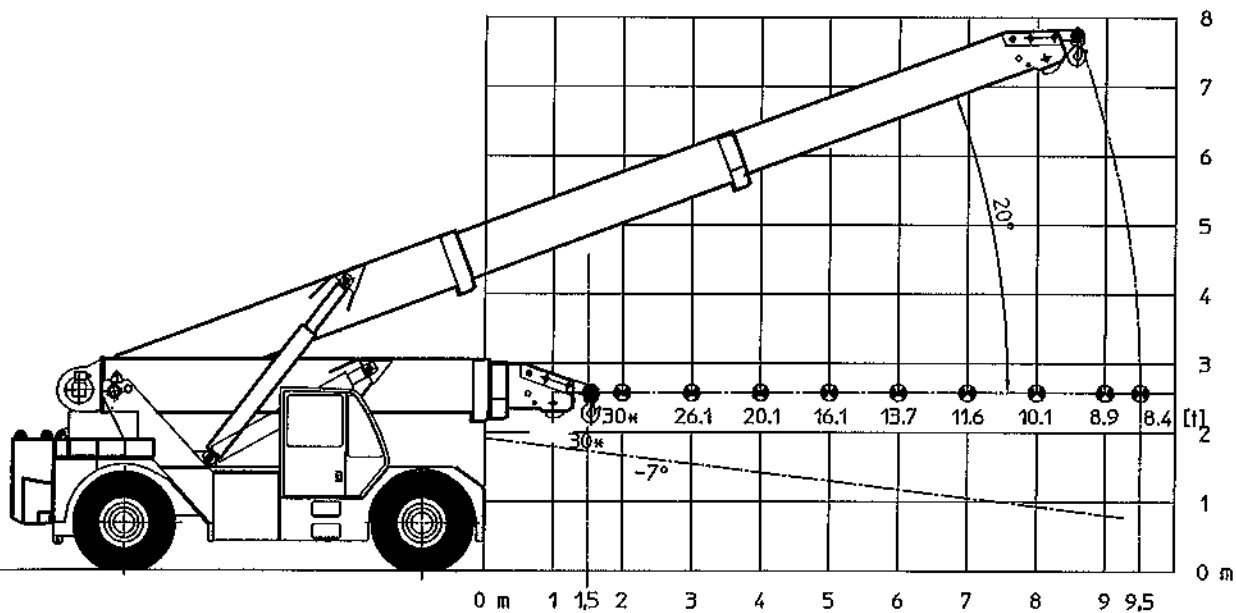


9

DIN



20°

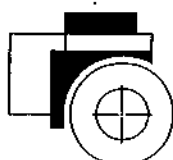


50/55tm

ORMIG

129297-1

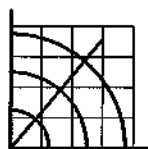
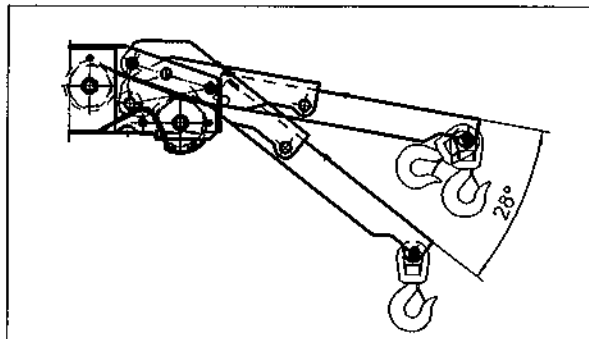
1+2+3+4+5



m

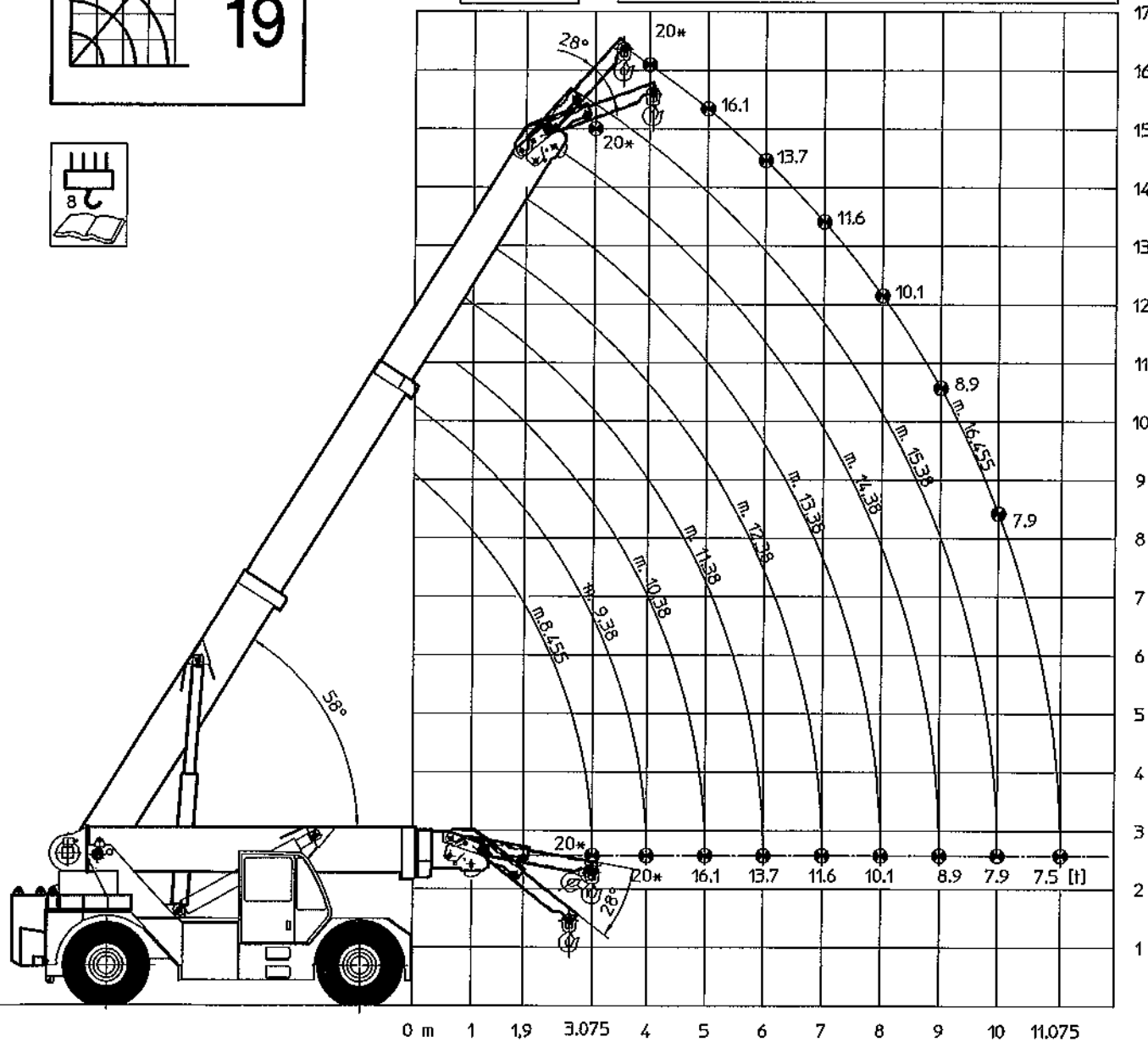
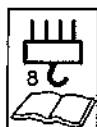


6,38 - 14,38



19

DIN



10 bar

B6

48 km/h

1 km/h

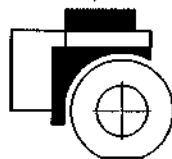
1 km/h

50/55tm

ORMIG

129292-1

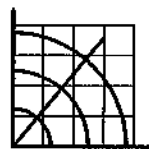
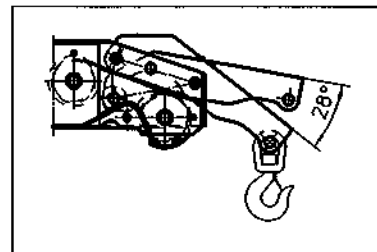
1+2+3+4+5



m

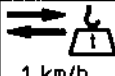
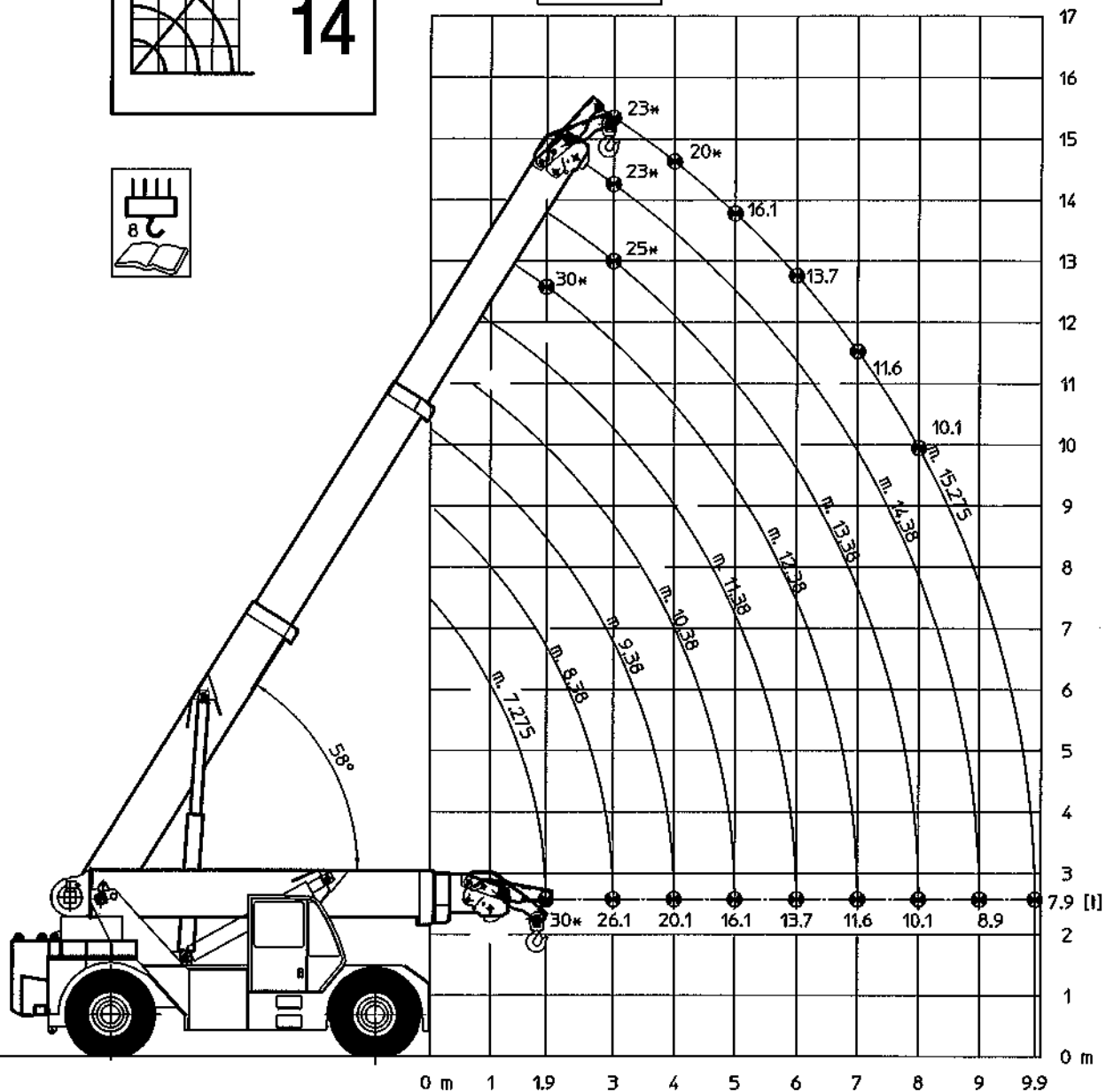
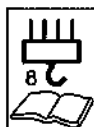


6,38 - 14,38



14

DIN



10 bar

48 km/h

1 km/h

1 km/h

